



*The Rose Institute of State and Local Government*

## PRESS RELEASE

February 1, 2010

Contact Information:

Douglas Johnson, Fellow. O: 909-621-8159, M: 310-200-2058, [douglas\\_johnson@alumni.cmc.edu](mailto:douglas_johnson@alumni.cmc.edu)

Ken Miller, Associate Director: O: 909-621-8159, [ken.miller@cmc.edu](mailto:ken.miller@cmc.edu)

[www.RoseReport.org](http://www.RoseReport.org)

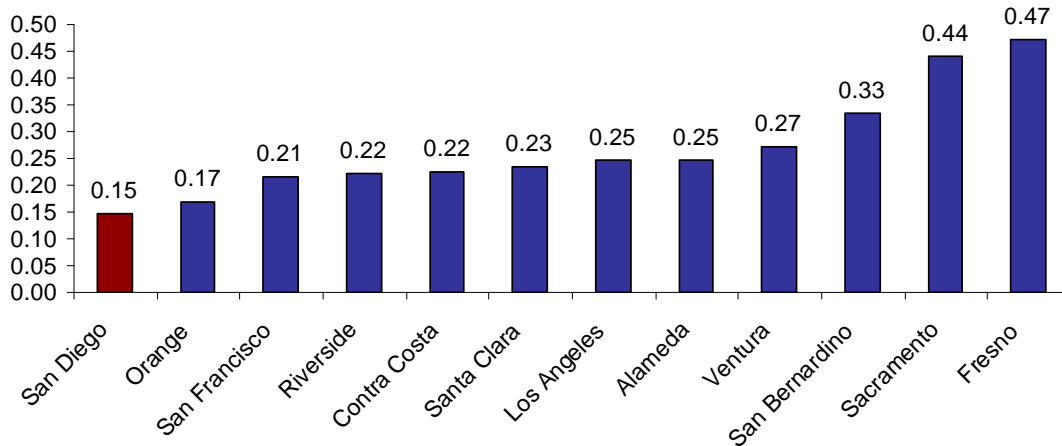
### Rose Institute Releases Study of Public Services Provided by San Diego County

[www.RoseReport.org/sdservices.pdf](http://www.RoseReport.org/sdservices.pdf)

The Rose Institute of State and Local Government at Claremont McKenna College today released "Comparing San Diego Services: A Twelve-County Analysis." The report comprehensively analyzes San Diego County spending and services in four categories: Welfare, Public Protection, Mental Health, and Other Public Assistance.

Looking at the estimated eligible population sizes, County spending, and service denial rates, the study ranks San Diego against the twelve largest counties in California. "San Diego County shows a consistent pattern of lower spending on and higher denial rates for welfare programs than comparable California counties," says Rose Institute Associate Director Ken Miller. "These findings could be the result of either an unwillingness to spend more or a more diligent checking of applicant qualifications."

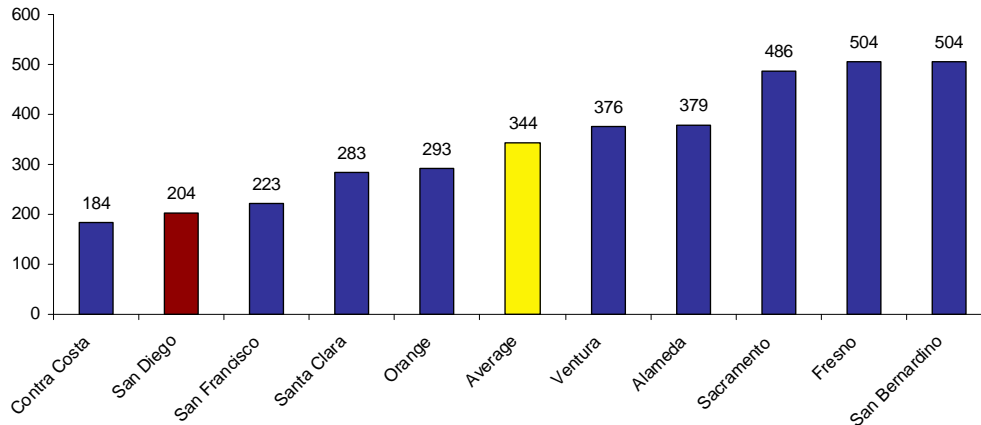
**Figure 3.11: Non-Assistance Food Stamp Recipients to Estimated Number of Eligibles, FY 07-08**



-- MORE --

In Public Protection, San Diego provides more resources, and lawyers carry lower caseloads, in both the prosecutor and the public defender offices:

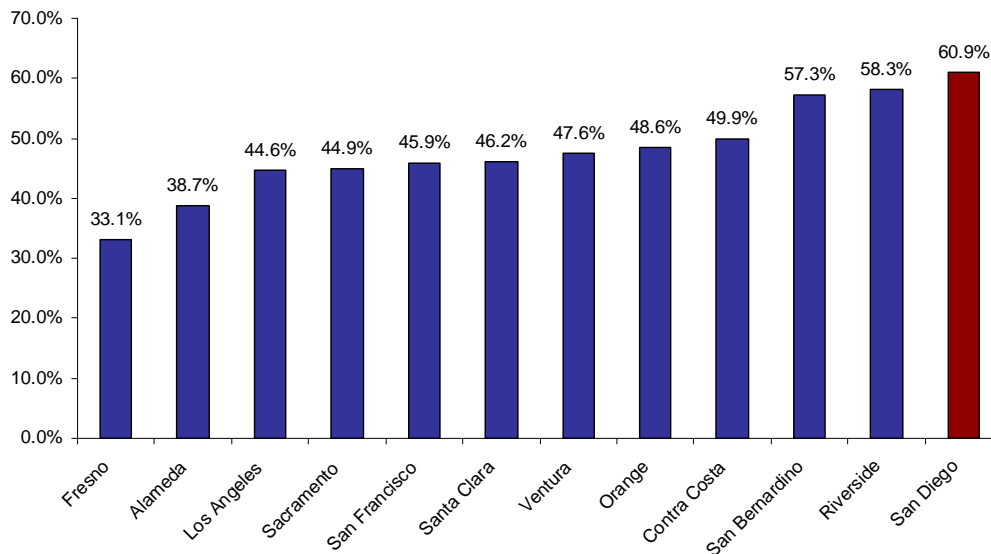
**Figure 2.18: Indigent Cases per Public Defender, 2007**



Dr. Miller noted "Compared to other California counties, San Diego County is clearly more willing to spend what it takes to give public defenders and prosecutors lower caseloads and more time to devote to each case before them."

San Diego County's welfare program participant rates show the County's diligent application review process and considerably higher denial rates compared to other large California counties:

**Figure 3.17: Percent of CalWORKs Applications Denied, FY 07-08**



Rose Fellow Douglas Johnson commented that "San Diego denies a higher percentage of welfare applications than any other large California county. From the public information available, we cannot tell whether that is from overly aggressive denials of eligible applicants or from more successful uncovering of ineligible applicants. "

-- MORE --

Each section of the report begins with an executive summary of the report contents, and Institute researchers are available to comment and/or clarify the report's findings.

**About the Rose Institute:**

The Rose Institute of State and Local Government at Claremont McKenna College provides research and management experiences for Claremont McKenna College students while conducting and publishing research on California government and politics.

Using computer technology, students and faculty at the Rose Institute advance knowledge about politics and provide services that assist in understanding the political process. Through the development of large computerized databases and advanced geographic retrieval systems, students become involved in projects focusing on topics such as redistricting, fiscal analysis, California demographics, survey research, and legal and regulatory analysis. The Rose Institute also works in collaboration with the Kosmont Companies to publish the annual *Kosmont-Rose Institute Cost of Doing Business Survey*®.

###